



DIVINE INSPIRATION

Anthony Lent's inspiration for the Muse collection is the goddesses of inspiration. An enduring subject of great masters, the divinities of art, music, poetry, and dance – depicted across frescoes, murals, mosaics, and sculptures – became a fitting subject for Tony Lent, founder of the brand. Fascinated by the divine patrons, Tony's Muse creations feature the face of goddesses with flowy hair, each strand painstakingly carved out by hand. The rings, crafted in 18k yellow gold, are accented with diamonds and hero stones like Mexican fire opal, sapphire and green honey moonstone. | anthonylent.com

JEWELRY

BY SMITHA SADANANDAN



PLAYFUL MOTION

Bucherer's Dizzler collection gets a trendy makeover this season. The original Dizzler jewels was created, in 1997, by an in-house designer, who was inspired by his observation of how people in a waiting room absent-mindedly turned their rings while daydreaming. The collection's name, Dizzler, comes from the word dizzy. The playful new rings display a special rotating function – an inner and outer ring are skillfully merged together; they can be turned on their axes and in opposite directions. Crafted in 18k yellow, rose and white gold, the rings set with diamonds and sapphires in colors of blue, black, pink, orange and violet. | bucherer.com



FROM ROME TO ABU DHABI

Jannah – A Five Petal Story by Bulgari is an unprecedented collaboration, the first of its kind, with HH Sheikha Fatima bint Hazza bin Zayed Al Nahyan of the ruling United Arab Emirates Royal Family. The Jannah Collection is the embodiment of both Bulgari and Sheikha Fatima’s “joyful and passionate love for life and devotion to heritage.” Lucia Silvestri, the Creative Director for High Jewelry for Bulgari, spent many hours with Sheikha Fatima listening to her stories and vision for the future. “There are a lot of similarities between Italian and Middle Eastern women...the warmth, generous hospitality, and sense of humor. Whether I’m in Italy or the Middle East, I feel at home,” says Lucia. Having visited the Grand Mosque in Abu Dhabi (commissioned by Sheikh Zayed) a number of times, she was inspired by the delicate five petals flowers that adorn the Carrara marble ceilings and architecture. This motif is interpreted in Bulgari’s Jannah Collection. The East-meets-West Jannah Collection was unveiled in February, under the magnificent dome of Louvre Abu Dhabi. Sonam Kapoor, actress and longtime friend of the brand, played a special role in telling the story of the fusion between eastern and western cultures. A special video dedicated to the collection has the actress embodying the figure of the Bulgari woman across the historic backdrop of two ancient cities – Roma and Abu Dhabi. This high jewelry necklace, in white gold with 492 buff-top emeralds, 14 drop emeralds, baguette diamonds, round diamonds and Akoya cultured pearls, is guaranteed to transfix you. | bulgari.com

BEAD FEST

This past summer, jewelry designer Loren Teetelli made an interesting discovery. She stumbled upon Kumihimo, a Japanese braiding technique, and now it pops up throughout her collection. On discovering Kumihimo braiding method, she wanted to make a rope using her handmade gold beads. “The beads were my solution to finding a purpose for my scrap metal that isn’t pure enough to be re-melted into sheet and wire (a certain level of purity is a requirement for the jewelry technique I work in),” says the former archeologist, who designs for her brand, Loren Nicole, using 22k gold. The bead rope bracelet, braided using Kumihimo, is made in 22k yellow gold (the beads are threaded on silk). It’s a heavy piece, but the movement is unreal. Who wants to snap it up? | loren-nicole.com





ENCHANTING PADPARADSCHA

The Blushing Wing necklace, a one-of-a-kind piece from Gübelin Jewellery, unveiled at this year's Art Genève, is inspired by the inner world of the padparadscha gem. Gübelin's necklace and its latest art collaboration, 'Dial M for Slippers,' with artist Miriam Laura Leonardi both reference the beauty of the rare sapphire from Sri Lanka. Artistically arranged with organically sweeping elements evoking feathers, the Blushing Wing red gold necklace is set with a 12.10 carat cushion-shape padparadscha sapphire and 120 sapphires in various pastel shades and brilliant-cut diamonds. The carefully coordinated pastel sapphires match the play of colors within the padparadscha in reference to the photomicrography, while the warm hue of the red gold highlights the beauty of the sapphire. To symbolize the 'Deeply Inspired philosophy,' each piece of Gübelin Jewellery contains a ruby. | [w: gubelin.com](http://w:gubelin.com)



HINT OF SUNSHINE

Robinson Pelham has a lovely collection of ready-to-buy ear wishes and orbs perfect for a fun ear party. This London-based jewelry brand, noted for its signature rainbow gem studded designs, brings out an orb and earwishes series, with a hint of sunshine. The itty-bitsy ladybirds, bees and spiders, busy weaving tiny webs, in yellow gold are set with multicolored or colored sapphire or diamonds. | robinsonpelham.com



NAME TO KNOW

Every once in a while, a designer pops up on the jewelry scene with remarkable creations that drives us into a tizzy. Stunning stones (we'll get to that in a bit) and significant designs make London high jeweler Krishna Choudhary a name to watch. Additionally, the covetable jewels are set with gems that have been treasured by his family back in Jaipur, India. This pair of gorgeous emerald floral earrings, in platinum, have paisley petals fashioned out of 16 cabochon Panjshir emeralds and two round Golconda diamonds. "The Golconda diamonds have been in my family from some time and the idea was to ornate them using the inspiration of the Mughal celestial foliage. Panjshir emeralds are very rare to find and are known for their amazing quality and color; I chose the Panjshir gems because of their superior quality. They were cut specially for the design, where every petal is cut in a paisley leaf pointing in different directions making it very organic. The color of the emeralds brings a beautiful volume to the earrings," says the creative director of Santi Jewels. | santijewels.com

FUTURISTIC MOSAIC

This brilliant independent jeweler on the New York scene, Heena Shah, is one to watch – and her brand, Valani Atelier, should be on your radar. These gorgeous new emerald rings made in 18k white gold are adorned with over 19 carats of Zambian emeralds and accented with over three carats of diamonds. "These distinct emerald earrings are designed to have a futuristic mosaic appeal, with bold lines and sharp edges accentuated with custom-cut emerald trapezoids on the corners. This one-of-a-kind piece went back and forth until each gemstone was perfectly re-polished to fit into the mounting, taking close to nine months to complete," says Heena, creative director. | valani.com



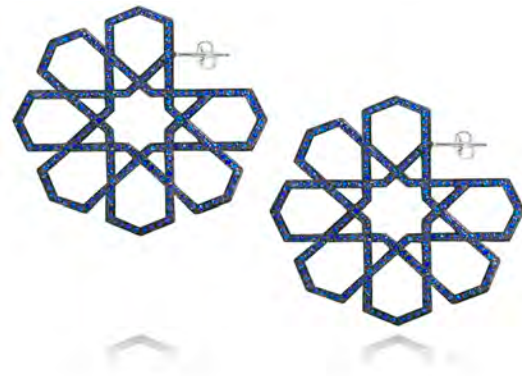


DUAL DELIGHT

For the Duo Collection, designer Swati Dhanak interprets the dual aspect of not only things but also the varied sides to an individual. Juxtaposed and contrasted with different materials and shapes side-by-side, the new Duo line features a split design on many of the pieces. It also plays off of the last collection in its use of fancy cut diamonds but features a more cluster setting, while focusing on utility. The cigar bands in the Duo series are split in their design; wear each band in multiple ways by turning the sides. | swatidhanak.com

CHASE AWAY THE BLUES

Beirut-born Ralph Masri channels Pantone's color of the year 2020, Classic Blue, with new iterations in blue sapphires. The Arabesque Deco, Phoenician Script, Sacred Windows, Modernist and Heliopolis collections all in 18k white gold are now available set with blue sapphires or in combination with sparkly diamonds. | ralphmasri.com



FASHIONABLY BOLD

Jen Rush's Draper collection might possibly trigger memories of the vibrancy, style, and fashion from Mad Men – the popular American television drama series set in the 1960s. It all began with one ring that she made to mark her adoration for the women in the TV show. Nostalgia for the glamorous 60's and 70's era of fashion in New York City, where the designer grew up, prompted her to create "a ring that Megan or Betty Draper might wear for an evening out." Taking inspiration from Mad men's women and their sense of style – Megan's effortless flair for fashion and decor and Betty's more traditional but equally glamorous – Jen came up with a great mix of versatile cocktail rings. The Draper collection includes pendants, charms, and bracelets in grey or white agate, carnelian, lapis lazuli, malachite, and tiger's eye with Malayan garnet, lavender quartz, turquoise, purple spinel, amethyst, moonstone, chrysoprase and peridot featuring as accent stones. | rushjewelrydesign.com